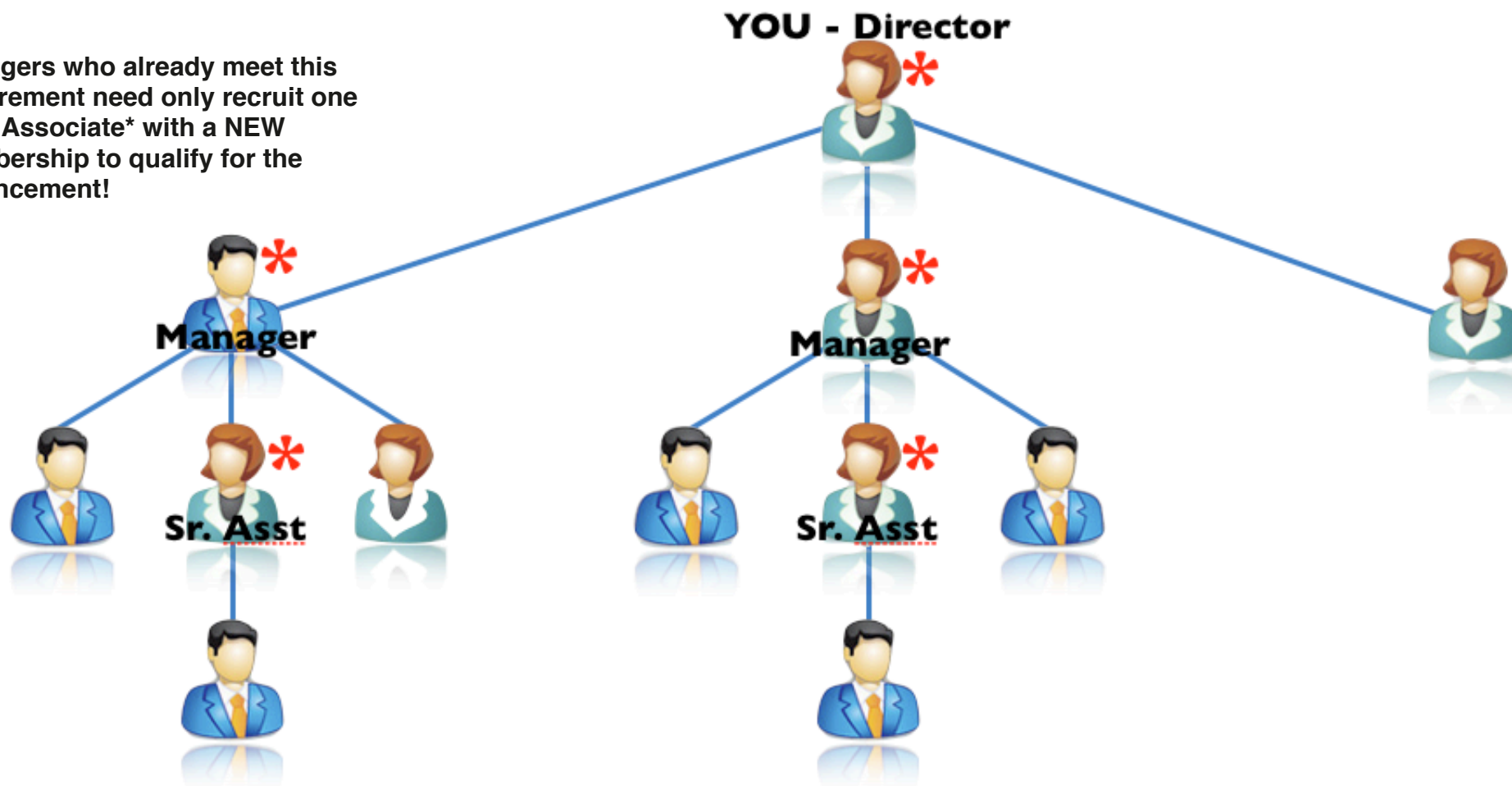


GO DIRECTOR IN NOVEMBER WITH 30% LESS EFFORT & EARN A \$1,000 CASH BONUS!

In November, you can GO DIRECTOR with as few as 11 Fast Start Associates.

Managers who already meet this requirement need only recruit one **NEW Associate*** with a **NEW membership** to qualify for the advancement!



NOVEMBER PROMOTIONS:

- * The \$249 Fast Start Entry Fee has been reduced to only \$72 in November!
- * Go Director with as few as 11 Fast Start Associates instead of 15. You only need two Manager legs instead of 3.
- * **Earn a \$1,000 BONUS when you Go Director in November.**

NOTE:

- *You must complete your Director promotion with two Manager legs no later than 2 pm Central, Monday November 30th.
- *You may recruit and place any of the above Associates you want anywhere in the organization. BUT all Associates in the example above must be “active” which means they MUST own at least the \$17.00 standard family plan membership unless they or their sponsor live in a licensed state. An Identity Theft Shield membership will suffice for associates who meet the licensed state criteria.
- *The Associates in the example above with an ***** next to them need to be the selling associate of the membership for at least one of the associates below them on their front line. In the example above where they only have one associate below them, they would need to be the selling Associate of the membership if you placed the associate under them or if they personally recruited the associate under them.
- * **As always, be sure to consult with Pre-Paid Legal Marketing Services often to double and triple check that you are on track.**